

CERTIFICATE OF LOCATION OF GOVERNMENT CORNER

NORTHEAST Corner of Section 36, Township 105, Range 42, 5TH P.M.

STATE OF MINNESOTA, County of MURRAY

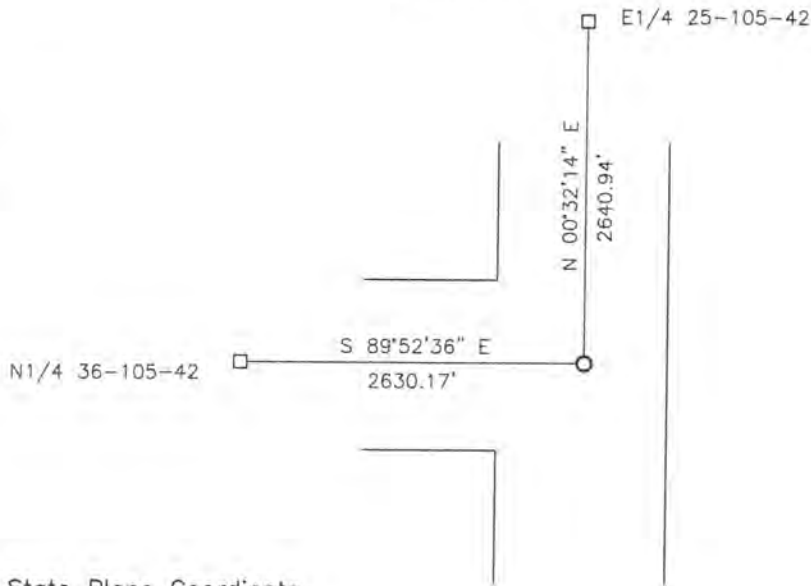
At the corner location shown on the sketch:

On 08/06/2018 found a 5/8" IRON.
DATE

left monument as found, lowered monument, removed monument (explain)

On _____ placed a _____
DATE

SKETCH OF REFERENCE TIES



Minnesota State Plane Coordinate
System Murray County Datum
NAD83 (1996)

N: 105389.531
E: 484930.022

Statement of evidence relative to this corner location is on back of page.

I hereby certify that this document and the data contained herein was prepared by me or under my direct supervision.

Daniel L. Buettel
License No. 43844

8/28/18
DATE

Statement of Evidence

In 1861, J. W. Myers did the original survey of the east line of the township.

On November 6, 1912, J. W. Woolsteincraft set a stone at the corner.

In 1940, the Murray County Highway Department located a concrete monument at the corner.

In 1971, the Murray County Highway Department found a concrete monument at the corner and set a railroad spike over it.

On June 1, 2015, the Murray County Highway Department found a railroad spike at the corner. It is 3' west and 2' south of the center of the intersection.

On August 6, 2018, Bueltel-Moseng Land Surveying found a railroad spike at the corner. It is 3' west and 2' south of the center of the intersection.